



# EPIC

## Pad Printing Machines

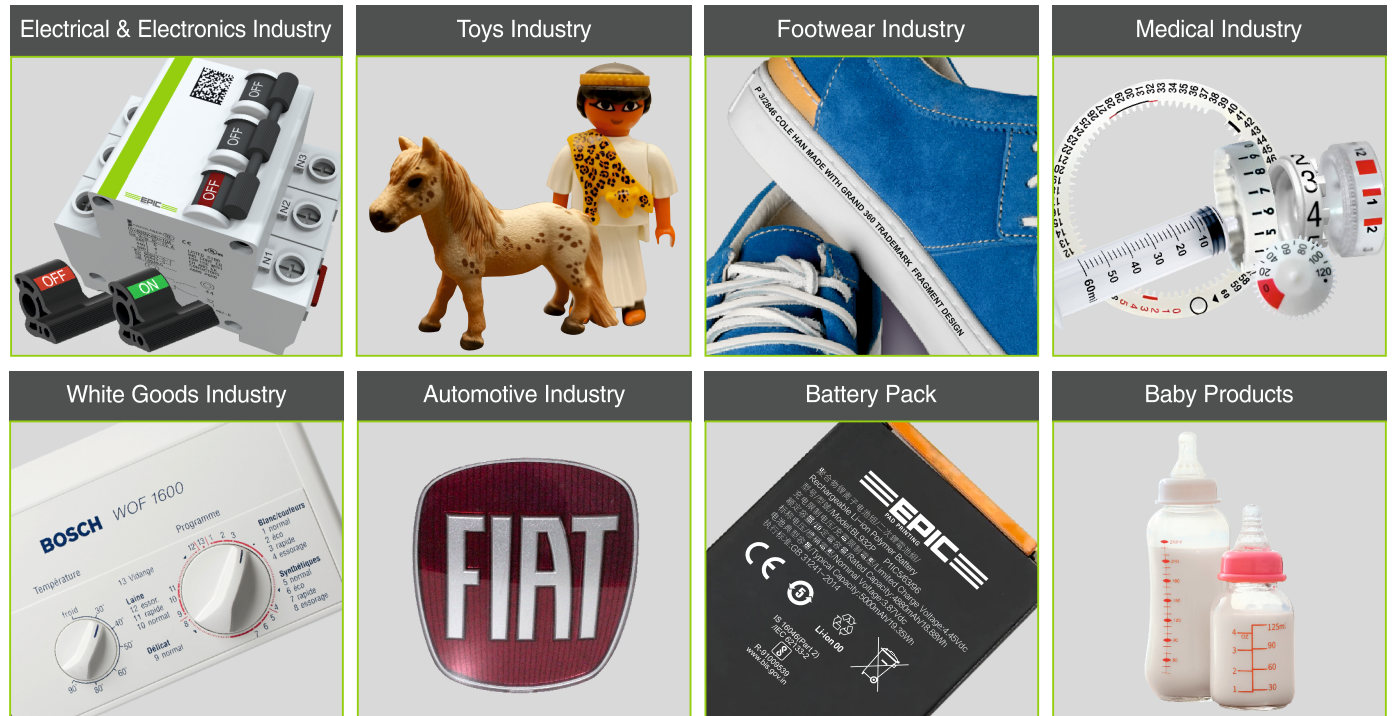


GREEN MACHINES FOR SUSTAINABLE FUTURE

Brand quality at fair price

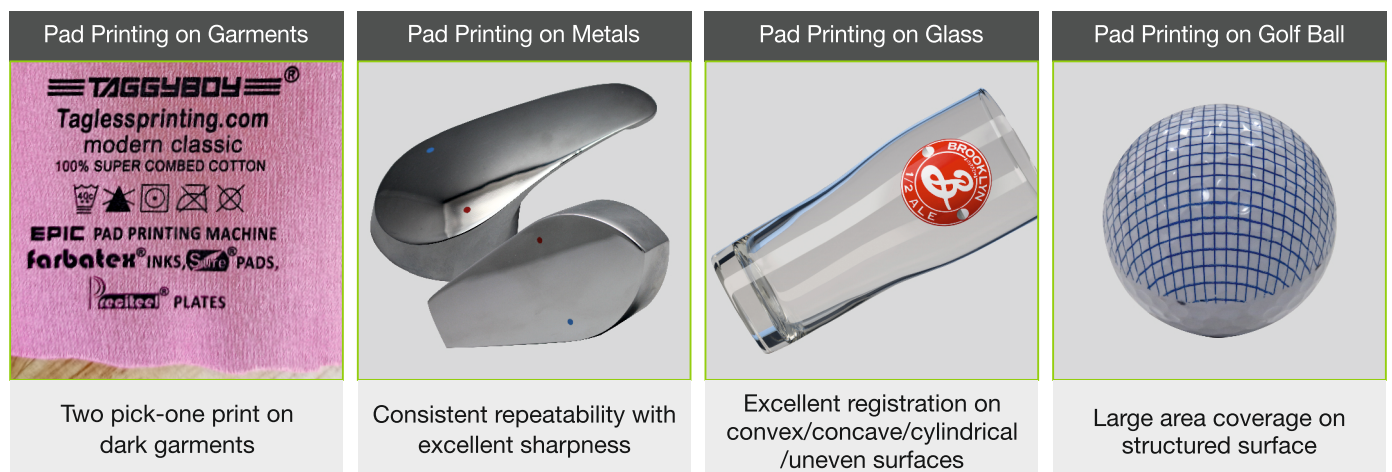
# Easy Integration into Automations

EPIC Pad Printing Machines are a range of European-inspired equipment with sleek and efficient designs, specifically tropicalized for the Asian environment. These machines are engineered for high energy efficiency and occupy minimal space, yet deliver outstanding performance in terms of speed, pressure, and accuracy, whether for single or multiple prints. They can easily integrate into automation systems via D-SUB 37 PINS and offer a wide range of options, including indexers, pre- and post-substrate treatment modules, ink residue pick-up modules, viscosity measurement, and thinner metering pumps. If you're seeking a solution that delivers exceptional results with the efficiency and precision demanded by the industrial sector, EPIC Pad Printing Machines are the perfect choice.



## Salient Features & Advantages

- Compact, simple and environmental friendly machines.
- Non-magnetic ink cup rings of 80 HRC hardness of tungsten carbide or high-tech ceramic as an alternative. Ring can be changed once worn off.
- Electro-pneumatic drive with PLC control and finger touch HMI from Europe.
- Low energy consumption.
- 37-pole automation interface allows addition of indexers, etc.
- Excellent and precise registration of image, each and every time. Thanks to its high end milled parts in very hard & tempered metals.
- High speed with sharp printing.
- Low ink consumption - Start with ink mixture as low as 15 grams (60 cup).
- Highest tampon pressure in a similar sized machines to use 22 shore A silicone rubber pads. Generally harder pads give better print quality.
- Multi print functions: Two pickups one print or just a cycle of two, three prints lets you print on dark and/or absorbent surfaces.
- Variable contact pressure on ink cup to reduce friction on cliché.
- All critical components from EUROPE.



Two pick-one print on dark garments

Consistent repeatability with excellent sharpness

Excellent registration on convex/concave/cylindrical /uneven surfaces

Large area coverage on structured surface

# Standard Pad Printing Machines

EP - 60



EP - 90



EP - 130



## Other Models

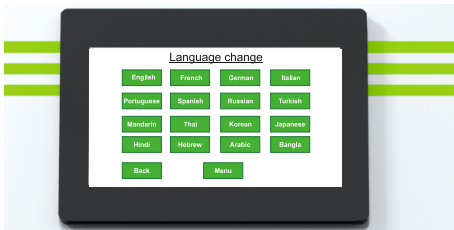
EP - 60-2CS



EP - 90-2CS



EP - 130-2 CS



## Multilingual HMI Mode

English, French, German, Italian, Portuguese, Spanish, Russian, Turkish, Mandarin, Thai, Korean, Japanese, Hindi, Hebrew, Arabic & many more.

## Optional Model



## TCS - Tape Cleaning System (Optional)

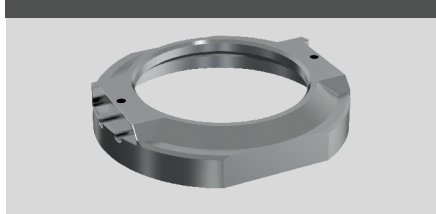
Our new and improved programmable Tape Cleaning System is designed to remove ink residue and dust from the pad surface, ensuring consistent and accurate printing. It is a valuable addition for industries that require precise and multiple prints.

## Accessories

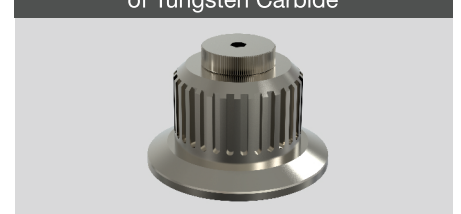
Quick Change Over System



Pressure Ring



Non-magnetic doctoring Ink Cup Made of Tungsten Carbide



## Scope of Supplies

Paper cups(2), Assembly table, Gripping tongs, Ink/doctoring cup, Pressure ring, Pad coupling, Printing pad(1), Foot switch, Tool kit, Manual

## Accessories (Optional)

Machine stand (DIY), x/y cross support for pad, Jigs, Rotary index table 2/4/6 stations

Magnetic holder plate (to hold thin cliché), Magnetic cliché, Tape cleaning system (TCS), Plates (Cliché), Inks, Tape, Pads

Machine May Vary In Actual

\* Optional



# Electro-pneumatic Ink Cup Series

Technical Features	Units	EP 60	EP 90	EP 130			
1. Part no.		160 000	190 000	130 000			
2. Ink doctoring cup	Φ mm	60	65*	90	95*	130	135*
3. Cliché size	mm	70x140		100x215		150x300	
4. Print image size max.	mm	Φ 55 (38 x 38)	60*	Φ 85 (60x60)	90*	Φ 125 (88x88)	130*
5. Single cycle		Yes	Yes	Yes			
6. Multiple printing double/ triple		Yes (Programable)	Yes (Programable)	Yes (Programable)			
7. Continuous run		Yes	Yes	Yes			
8. Cycle counter		Yes	Yes	Yes			
9. Number of cycles (in continuous single run)	cycles/h	Up to 2000	Up to 1600	Up to 1250			
10. Pad stroke onto cliché	mm	20-50	30-70	35-80			
11. Pad stroke onto work piece, variably adjustable	mm	20-80	35-100	25-120			
12. Pad installation height max.	mm	66	100	120			
13. Force of pressure	N	750	1200	3000			
14. Variable speed control		Yes	Yes	Yes			
15. Precise X-Y-Z-R table		Yes	Yes	Yes			
16. Noise emission	dB (A)	75-85	75-85	75-85			
17. Length	mm	600	702	925			
18. Height	mm	535	670	850			
19. Width	mm	250	300	420			
20. Weight* (net/gross)	kgs	50/60	80/100	140/170			
21. Drive		Electro-pneumatic	Electro-pneumatic	Electro-pneumatic			
22. Control		PLC	PLC	PLC			
23. User interface HMI		4"	4"	7"			
24. Connected load	kW	0.2	0.2	0.2			
25. Prefuse		6A	6A	6A			
26. Power supply (special voltage on request)		230 V 1/N/PE	230 V 1/N/PE	230 V 1/N/PE			
27. Power frequency	Hz	50-60	50-60	50-60			
28. Control voltage	V/DC	24	24	24			
29. Air consumption/cycle	NL	3	5.7	17.5			
30. Pneumatic supply with fine filter 5 um	Bar	6	6	6			
31. Tape cleaning system (TCS)		Optional	Optional	Optional			
32. Indexing module		Optional	Optional	Optional			
33. DIY Stand ( Do it Yourself)		Optional	Optional	Optional			
34. Air shower		Optional	Optional	Optional			
35. Global Language HMI - Default English	27	Yes	Yes	Yes			

Ns240702



**Manufactured by :**  
**Spinks Impex**

Plot No. 172 & 174, Village Katha, Baddi, Distt Solan, H.P. 173205. India.

**Spinks World (H.Q.) :**

Plot no.135, Pace City-1, Sec 37 Gurugram 122001, Haryana. India.

**Sales Offices:**

**India**

Ahmedabad | Baddi | Bengaluru | Chennai | Delhi | Gurugram | Hyderabad | Haridwar | Kolkata | Manesar | Mumbai | Pune | Tirupur

**Global**

Bangladesh | Nepal | Srilanka | UAE | USA | Switzerland

**Email :** info@epicpadprinting.com  
info@spinksworld.com

**Website :** www.epicpadprinting.com  
www.spinksworld.com

**Contact :** +91 9210626626



All logos & artworks are property of respective companies

\* Optional